

## Weekly Update for June 3, 2025

### In this Issue

In Memoriam—Elder Gerald “Jerry” Fry

2025-2027 Book of Order

Shred-It Event

Can AI Deliver the Word of God?

Book List for Empowering Congregations



Choirstall woodcarving image donated by Jim Womack and Anne Richardson,  
a project of the Vanderbilt Divinity Library, Nashville, TN.

*And suddenly from heaven there came a sound  
like the rush of a violent wind,  
and it filled the entire house  
where they were sitting.*

Acts 2:2 (NRSVue)

---

**In Memoriam—  
Elder Gerald “Jerry” Fry**



It is with sadness, yet assurance of the joy of resurrection, that we share the passing of Jerry Fry on Wednesday, May 14. Jerry was a long-time member of New Bethlehem Presbyterian Church where he was an Elder.

Jerry served the Beaver-Butler Presbytery in the early 2000s as Vice-Moderator, a member of CT and chair of the Faith and Discipleship Unit. He also was the Office Manager and Administrator at the Presbytery Office following Stephen Polley's retirement.

[Read his full obituary...](#)



## 2025-2027 Book of Order

The presbytery office will be placing a bulk order for the updated Book of Order at a cost of \$9.25/each. If ordered individually from PC(USA) the cost is \$10.00.

This book is Part II of the Constitution of the Presbyterian Church (U.S.A.). This volume contains the Foundations of Presbyterian Polity, the Form of Government, the Directory for Worship, and the Church Discipline. Additional information is provided to the reader through the inclusion of Received Ecumenical Statements of Guidance and Articles of Agreement.

The books should ship in July. An interactive pdf and an updated Annotated Book of Order will be made available from the PC(USA).

To place an order contact the Presbytery Office by **June 15** indicating the number of copies. Or download an order form and return with payment to Beaver-Butler Presbytery, P.O. Box 279, Zelienople, PA 16063. Payment is due at time of order.

[Download order form...](#)



## Shred-It Event

**Saturday, June 21, 9 a.m.-12 p.m.**

Presbytery Center Parking Lot  
134B South Main Street

The "Shred-It Event" will be held in the parking lot off High Street behind the Presbytery Center. This is a free event for our churches.

Individuals or businesses are welcome to

participate, though a donation is requested. Staples, paper clips or even binder clips do not need to be removed.

Please share the opportunity!

Questions? Please contact the Presbytery Office ([office@beaverbutler.org](mailto:office@beaverbutler.org) or 724-452-7515).

[Download flyer and post...](#)

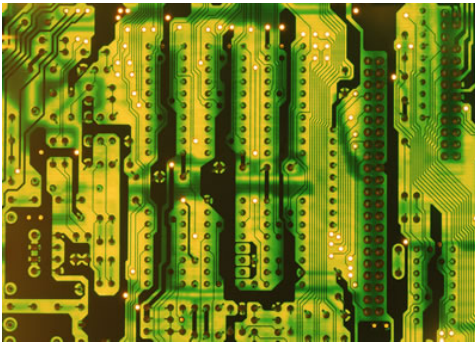
[Download bulletin insert...](#)

---

## Did you know?



Presbyterian Disaster Assistance (PDA) enables congregations and partners of the Presbyterian Church (U.S.A) to witness to the healing love of Christ through caring for communities adversely affected by crisis and catastrophic event.



---

### Can AI Deliver the Word of God?

By Beth Waltemath, Presbyterian News Service

What is the difference between worship or a Vacation Bible School curriculum planned by AI and one written by your ministry team? What ethical and environmental concerns should play a role in when and how you use AI in your ministry?

AI may be able to predict the next best word or phrase in a pastoral prayer, but can it really pray for a congregation? Programs trained on massive sets of language can write a sermon in less than a minute, but can they deliver the Word of God?

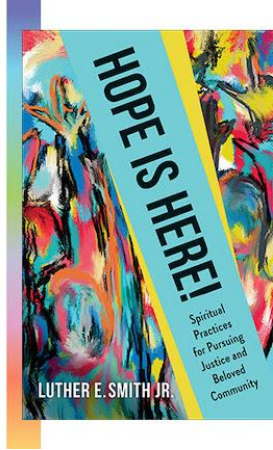
[Continue reading...](#)

---

### Empowering Congregations to Grow, Connect and Thrive

The PC(USA) offers a list of books designed to strengthen your congregation's mission and vitality. Each book answers four key questions — Who is it for? What is it about? Why is it needed? How is it put to use? — to help your church engage deeply in justice, community building, and stewardship.

[Go to the list...](#)



## VACATION BIBLE SCHOOLS

Please download and post flyer. Flyer will be updated until June 2.

[Click here to download...](#)

### ***Road Trip***

**Ohio United Church, Aliquippa**

Monday-Friday, June 9-13, 9:30 a.m.-12 p.m.

### ***Our Faith is Over the Top!***

**Old Union Church, Mars**

Monday-Thursday, June 9-12, 6-8 p.m.

### ***SCUBA***

**Saxonburg Memorial Church Saxonburg, Saxonburg**

Monday-Friday, June 9-13, 6-8:30 p.m.

### ***Road Trip***

**Cranberry Community United Church, Cranberry Township**

Monday-Friday, June 16-20, 9 a.m.-12 p.m. OR 5:45-8:15 p.m.

### ***Journey with Jesus***

**At Park Church, Beaver with Vanport Church, Vanport**

Monday-Wednesday, June 16-18, 9:45 a.m.-12:15 p.m.

### ***WildLIVE!***

**Westminster Church, Sarver**

Monday-Friday, June 16-20, 9 a.m.-12:30 p.m.

### ***Rocky Railway***

**The Galilean Church with and at New Galilee Church of the Nazarene, New Galilee**

Monday-Friday, June 23-27, 6-8:30 p.m.

### ***Magnified***

**Glade Run Church, Valencia**

Monday-Friday, June 23-27, 9-11:30 a.m.

### ***True North***

**Westminster United Church, Evans City**

Monday-Friday, June 23-27, 9-11:30 a.m.

### ***True North***

**At Mars United with Valencia and St. John Lutheran Churches, Mars**

Sunday-Thursday, July 13–17, 6-8:20 p.m.

***True North***

**Plains Presbyterian Church, Cranberry Township**

Monday-Friday, July 14-18, 6:30-8:30 p.m.

***Camp Firelight***

**Calvin Presbyterian Church, Zelienople**

Monday-Thursday, July 28-31, 6-8 p.m.

## CHURCH EVENTS

Support and promote worship, fellowship, and fundraising events  
by congregations in our presbytery.

Send event information to [chrisanngoossen@beaverbutler.org](mailto:chrisanngoossen@beaverbutler.org). Attach flyers and brochures as PDF documents and slides as PowerPoint documents.

## PRESBYTERY EVENTS

[Click here for additional information...](#)

### SHRED-IT EVENT

**Saturday, June 21, 9 a.m.-12 p.m.**

Presbytery Center Parking Lot (behind the building)

### NEW WILMINGTON MISSION CONFERENCE

**Friday, July 18-Wednesday July 23**

Westminster College, New Wilmington, PA

*Youth Scholarships are available.*

### PRESBYTERIAN YOUTH TRIENNIUM

**Monday-Thursday, July 28-31, 2025**

Louisville, Kentucky

Our Beaver-Butler Presbytery Youth Coordinator will register youth for the conference.

### MISSION TRIP WITH OLD UNION CHURCH

**Sunday, August 10-Saturday, August 16**

### NORTHEAST WEE KIRK CONFERENCE

**Monday-Wednesday, October 13-15**

Laurelville Retreat Center, Mt. Pleasant, PA

## SYNOD OF THE TRINITY EVENTS

[Click here for information...](#)

## PRESBYTERY NEWS

[Click here for news you may have missed...](#)

## EMPLOYMENT OPPORTUNITIES

*[Click here for position descriptions and contact information...](#)*

### Church Administrative Coordinator

Vanport Church, Vanport

### Administrative Assistant

Jefferson Center Church, Saxonburg

## THE PRESBYTERY OFFICE

### Regular Office Hours

Monday-Thursday, 9:30 a.m.-1 p.m.  
or by appointment.

### 2025 Holiday Schedule

New Year's Day...January 1  
Martin Luther King Day...January 20  
President's Day...February 17  
Memorial Day...May 26  
Juneteenth...June 19  
Independence Day...July 3  
Labor Day...September 1  
Veterans' Day...November 11  
Thanksgiving Day...November 27  
Christmas Eve...December 24  
Christmas Day...December 25  
Christmas Week...December 26-29

### 2025 Presbytery Meetings

**Saturday, January 25, 10 a.m.**

Lunch  
Old Union, Mars

**Tuesday, March 25, 6 p.m.**

Glade Run, Valencia

**Tuesday, May 27, 6 p.m.**

Crestview Community, Callery

**Tuesday, July 29, 6 p.m.**

Vanport at Vanport with Park, Beaver

**Tuesday, September 23, 4 p.m.**

Dinner  
New Bethlehem, Aliquippa

**Tuesday, November 18, 6 p.m.**

Ohio United, Aliquippa

### Beaver-Butler Presbytery Center

(P.O. Box 279) 134-B South Main Street, Zelienople, PA 16063 | 724-452-7515  
[office@beaverbutler.org](mailto:office@beaverbutler.org) | [www.beaverbutler.org](http://www.beaverbutler.org)

### Beaver-Butler Presbytery



### Beaver-Butler Presbytery Youth



### Presbytery Weekly Update

To share announcements and news or to add names to the mailing list,  
contact ChrisAnn at [chrisanngoossen@beaverbutler.org](mailto:chrisanngoossen@beaverbutler.org). To access back issues,  
go to [beaverbutler.org/weekly-update-e-newsletter/](http://beaverbutler.org/weekly-update-e-newsletter/).



Try email marketing for free today!