



# Beaver-Butler Presbytery

Serving God...Serving You

## Weekly Update for December 19, 2023

### In this Issue

**The Rev. Robert Edmundson Retires**

**Lego Tournament**

**Christmas Joy Special Offering**

**Office Closed for Staff Lunch**

**Office Closed for Holidays**

**Final *Weekly Update* for 2023**



*“This will be a sign for you:  
you will find a child wrapped in bands of cloth  
and lying in a manger.”*

The Angel—Luke 2:12 (NRSV)

---

## THE REVEREND ROBERT EDMUNDSON RETIRES

The Reverend Bob Edmundson was recognized at the November Presbytery on the occasion of his retirement from actively serving in ministry. Bob was the pastor of North Washington Church in North Washington and Concord Church in Hooker since early 2017.

[\*Read more...\*](#)



---

## LEGO TOURNAMENT

**Saturday, January 13**  
**10 a.m.-2 p.m.**

Old Union Presbyterian Church  
200 Union Church Rd, Mars

Cost of \$8.00 includes lunch.

Open to everyone in 1st through 6th grades, with judging in 3 age categories.

You must supply your own materials (they do not need to be Lego brand). Judging will take place for both pre-built designs, and creations made on-site. All work must be original designs—no kit designs, please.

To sign up or for more information, contact Old Union Presbyterian Church at 724-538-8672 or [OldUnionChurch@gmail.com](mailto:OldUnionChurch@gmail.com).

Learn more by downloading the flyer. Please post in your church.

[\*Download flyer...\*](#)

---



## CHRISTMAS JOY

### *Special Offering*

Why is the Christmas carol “What Child Is This” so meaningful to us? Yes, it links a beautiful tune with inspiring words. But it is more than that. It is in the vision behind and beyond the tune and text where we find the deeper

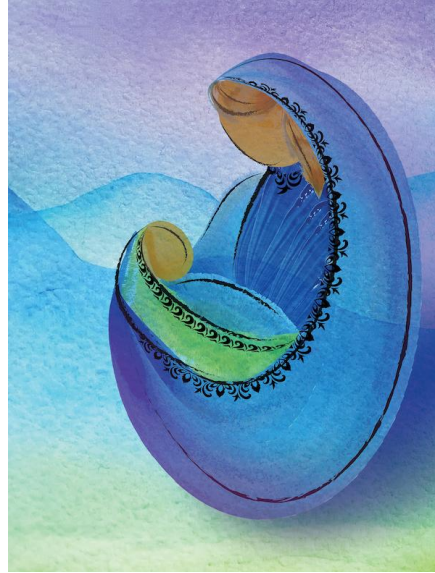
truths.

When we sing “What Child Is This,” we sing of a flesh-and-blood human, born under the most vulnerable of conditions. We sing of Emmanuel, “God with us.”

[\*Continue reading...\*](#)

Churches should submit Special Offerings through the Presbytery Office.

[\*Download a remittance form...\*](#)



The Presbytery Office will be closed between 12 noon and 1:30 p.m. on Tuesday, December 19 so the staff can enjoy a Christmas luncheon.



The Presbytery Office will be closed for Christmas and New Year's Day starting on Thursday, December 21. The staff will return on Tuesday, January 2.



***A Blessed Christmas and New Year!***

This is the final issue of *The Weekly Update* for 2023. Thank you for staying connected to the presbytery by reading and contributing to our E-newsletters. The next issue will arrive in your mailbox on January 9, 2024.

## PRESBYTERY NEWS

*Click for news you may have missed...*

## SYNOD OF THE TRINITY EVENTS

*Click for Information...*

## PRESBYTERY EVENTS

*Click for Additional Information...*

### **PRESBYTERY YOUTH BOWLING PARTY**

**Sunday, January 28, 3-5 p.m.**

Family Bowlaway Fun Center—540 Fairground Hill Road, Butler

### **LEADER CONNECT—NEXT GEN LEADER RETREAT**

**Monday-Wednesday, January 29-31, 2024**

Crestfield Camp and Conference Center—Slippery Rock, PA

*Hosted by Pittsburgh Presbytery*

### **PRAYER STATIONS PRESBYTERY YOUTH EVENT**

**Sunday, March 24, 4-5:30 p.m.**

Cranberry Community United Church

2662 Rochester Road, Cranberry Township

## CHURCH EVENTS

**Support and promote worship, fellowship and fundraising events  
hosted by congregations in our presbytery.**

### **BLUE CHRISTMAS SERVICE of Healing and Wholeness**

**Thursday, December 21, 7 p.m.**

Concord Church—2832 Conway Wallrose Road, Baden

***Download and post flyer***

### **LEGO TOURNAMENT**

**Saturday, January 13, 10 a.m.-2 p.m.**

Old Union Presbyterian Church—200 Union Church Rd, Mars

***Download and post flyer...***

Send event information to [chrisanngoossen@beaverbutler.org](mailto:chrisanngoossen@beaverbutler.org).

Attach flyers and brochures as PDF documents  
and slides as PowerPoint documents.

## EMPLOYMENT OPPORTUNITIES

*Click for position descriptions and contact information.*

### **Administrative Assistant (Part Time)**

Cranberry Community United Church

### **Office Assistant/Receptionist (Part Time)**

**Program Officer**  
Common Ground USA

**Pianist and/or Organist**  
Concord, West Sunbury and North Washington, North Washington

---

## THE PRESBYTERY OFFICE

### Regular Office Hours

Monday-Thursday, 9:30 a.m.-1 p.m.  
or by appointment.

### 2024 Holiday Schedule

New Year's Day...January 1  
Martin Luther King Day...January 15  
President's Day...February 19  
Memorial Day...May 27  
Juneteenth...June 19  
Independence Day...July 4  
Labor Day...September 2  
Veterans' Day...November 11  
Thanksgiving Day...November 28  
Christmas Eve...December 24  
Christmas Day...December 25  
Christmas Week...December 26-29

### 2024 Presbytery Meetings

**Saturday, January 27, 10 a.m.**  
Lunch  
North Sewickley, Ellwood City

**Tuesday, March 19, 6 p.m.**  
Calvin, Zelienople

**Tuesday, May 28, 6 p.m.**  
Concord, Baden

**Tuesday, July 30, 6 p.m.**  
Clinton, Saxonburg

**Tuesday, September 24, 4 p.m.**  
Dinner  
Hosted by First, Darlington and  
The Galilean, New Galilee  
New Galilee Community Center

**Tuesday, November 19, 6 p.m.**  
New Sewickley, Rochester

*[Click for Presbytery Calendar](#)*

---

### Beaver-Butler Presbytery Center

(P.O. Box 279)  
134-B South Main Street  
Zelienople, PA 16063  
724-452-7515

*[office@beaverbutler.org](mailto:office@beaverbutler.org)*  
*[www.beaverbutler.org](http://www.beaverbutler.org)*

**Beaver-Butler Presbytery**

**Beaver-Butler Presbytery Youth**



### Presbytery Weekly Update

To share announcements and news or to add names to the mailing list,

contact ChrisAnn at [chrisanngoossen@beaverbutler.org](mailto:chrisanngoossen@beaverbutler.org). To access back issues,  
go to <https://beaverbutler.org/weekly-update-e-newsletter/>.

Beaver-Butler Presbytery | 134-B South Main Street, Zelienople, PA 16063

[Unsubscribe resourcecenter@beaverbutler.org](mailto:resourcecenter@beaverbutler.org)

[Update Profile](#) | [Constant Contact Data Notice](#)

Sent by [chrisanngoossen@beaverbutler.org](mailto:chrisanngoossen@beaverbutler.org) powered by



Try email marketing for free today!